

# **Secur***alert*™

## GENERATION II

### ***M900 V2.5***

*EchoStream Ethernet Installation Guide*

*Revision july 2009*  
Version 1.1

## Table of contents

1.0 General description .....	3
2.0 Hook up EN4000 module and DIGI SP One device.....	4
3.0 Setting Digi One SP Device.....	5
3.1 Start the wizard.....	5
3.2 Select One Digi One SP module.....	6
3.3 Set the IP Address.....	7
3.4 Select type of connection.....	8
3.5 Select UDP Connection.....	9
3.6 Set the information concerning the two centrals.....	10
3.7 Serial setting.....	11
3.8 Validation.....	12
3.9 Wait.....	13
3.10 Configure the Other Digi One SP.....	14
4.0 Install the EN1223S module.....	15
5.0 Start the M900 Central.....	16

Securalert™ is a trademark, exclusive property of Nordicom Inc.

Windows™ XP is a trademark of Microsoft Corp.

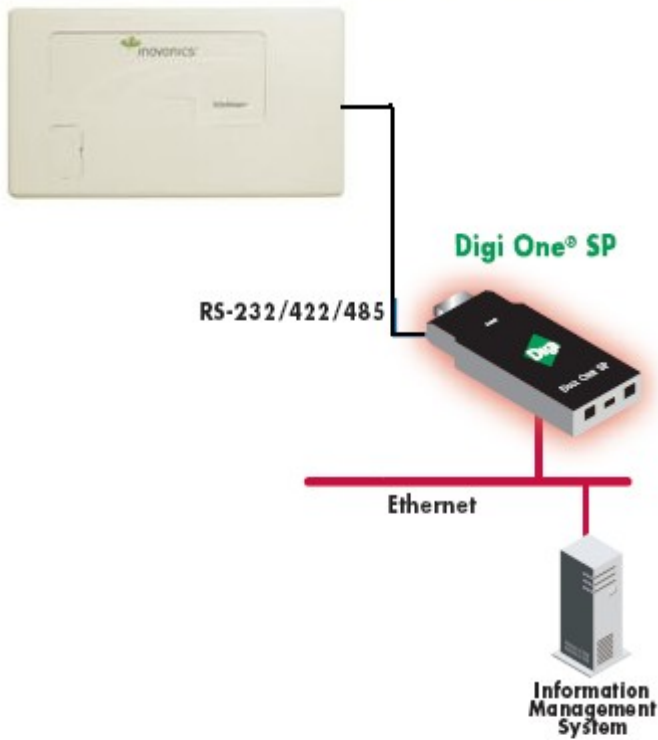
This document is protected by copyright. All rights reserved for all countries.

# 1.0 General description

This document is produced to permit End user to hook up Inovonic EN4000 Serial Receiver and Digi One SP module to the network.

Securalert™ will then be able to process all information coming from the transmitters (EN1223S and EN1235S) over the network.

## EN4000 - Universal Serial Receiver



EN1223S



EN1235S

## 2.0 Hook up EN4000 module and DIGI SP One device

- Connect the RS-232 extension from the EN4000 module to its equivalent on the Digi One SP
- Connect Digi One SP and EN4000 to the power outlet
- Connect Digi One SP to the network drop

## 3.0 Setting Digi One SP Device

Follow the next steps to Digi One SP device.

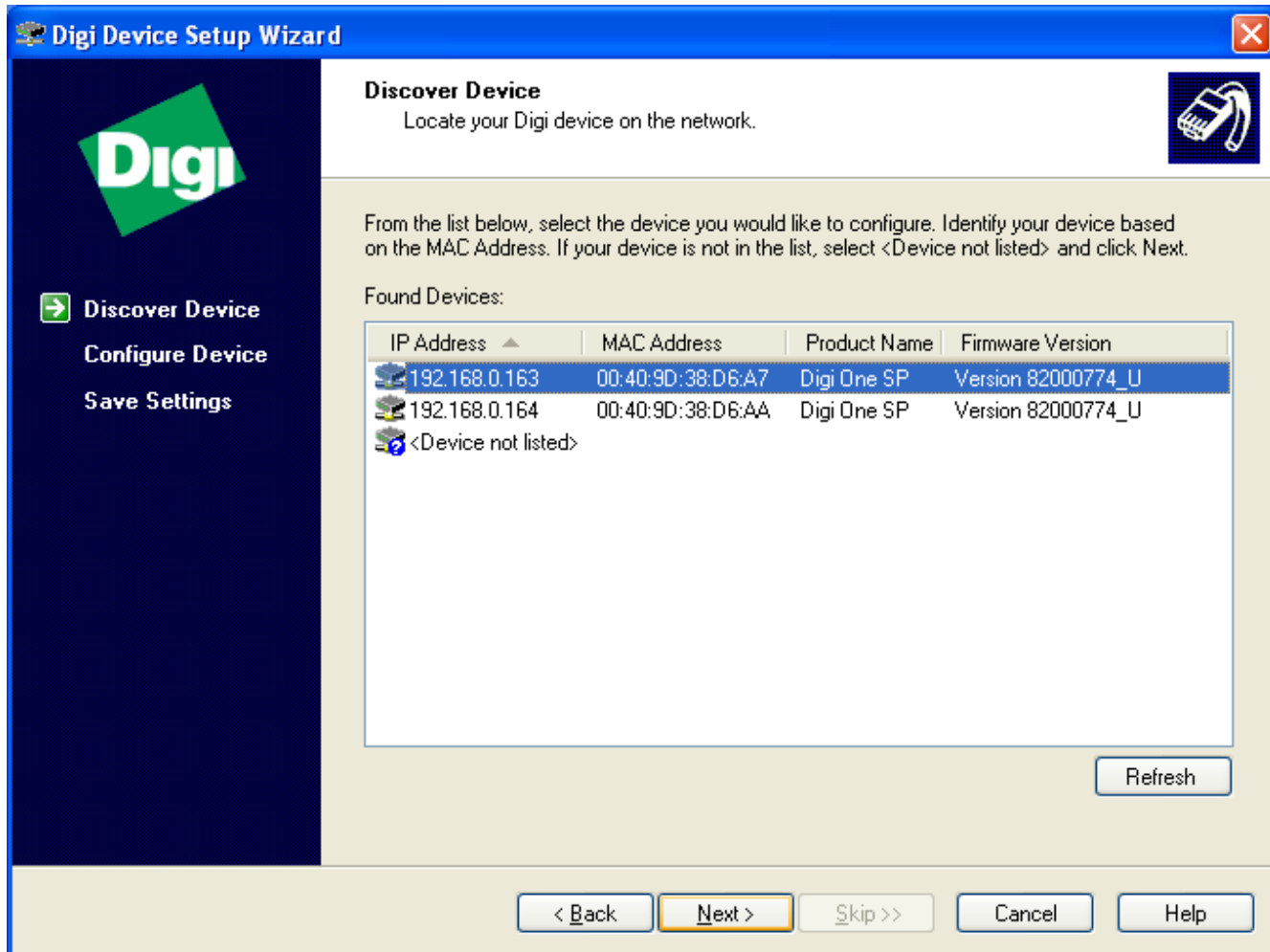
### 3.1 Start the wizard

Start the wizard, from the icon “Digi One Sp Wizard” on the desktop or insert the Cd-Rom on any computer in the network. The Following Screen will appear: Click Next



### 3.2 Select One Digi One SP module

- Make Sure The Digi One SP Devices are connected and hooked to the network.
- Once they are well hooken, when the refresh button is pressed. They should appear on the list
- Select one of the two device listed, the other will be done later.
- Click Next



### 3.3 Set the IP Address

- Select “Use the following IP Address”
- Enter the information
- Click Next

**Digi Device Setup Wizard**

**Configure Network Settings**  
Enter the following settings to configure the Digi One SP for your network.

The network settings can be assigned automatically if your network supports this capability. Otherwise, you need to ask your network administrator for the appropriate network settings.

Obtain IP settings automatically using DHCP

Use the following IP settings

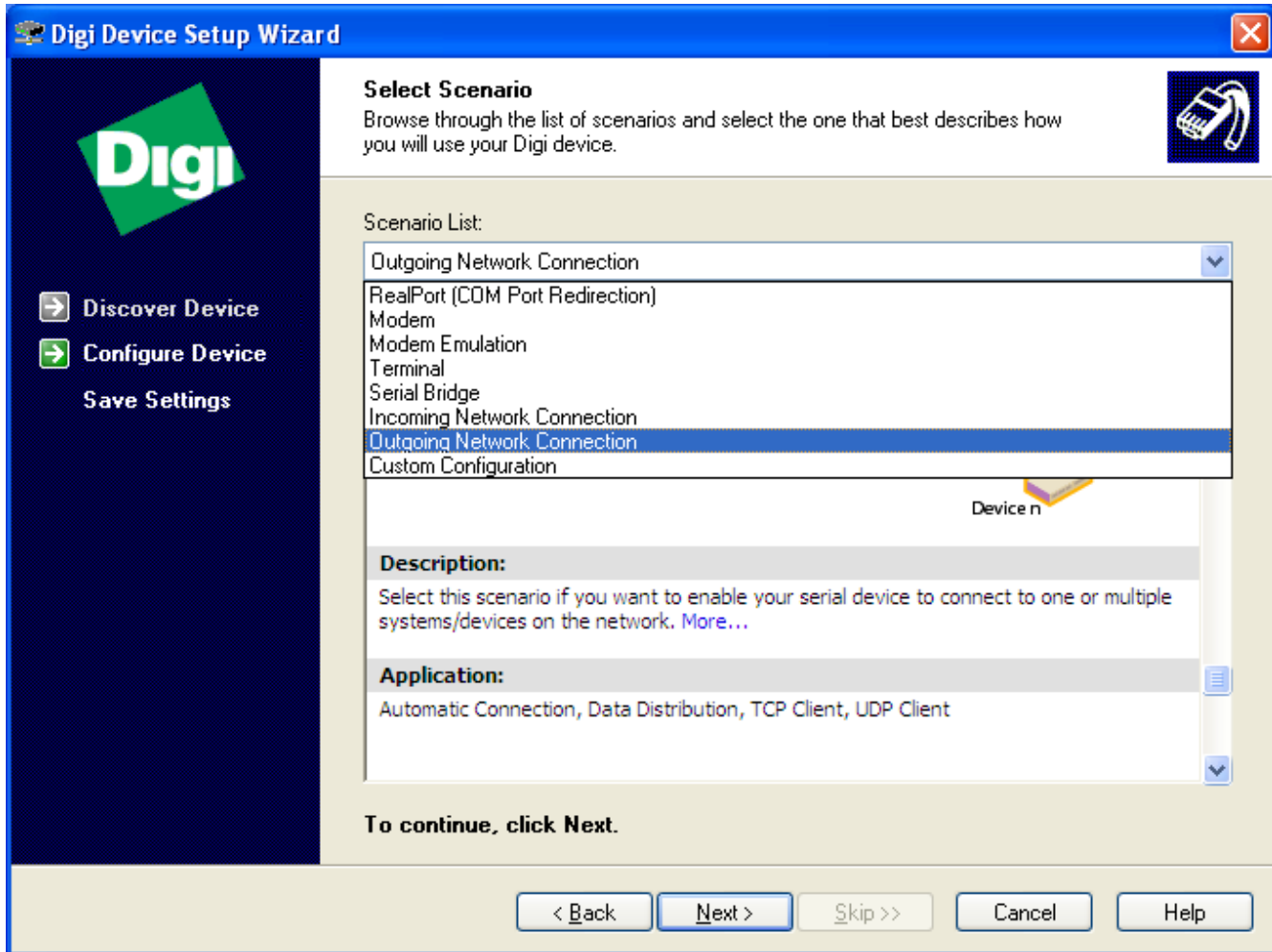
IP Address: 192 . 168 . 0 . 163  
Subnet Mask: 255 . 255 . 255 . 0  
Default Gateway: 192 . 168 . 0 . 1  
DNS Server: 192 . 168 . 0 . 1  
Domain:   
Host Name:

To continue, click **Next**.

< Back   Next >   Skip >>   Cancel   Help

### 3.4 Select type of connection

- Select “Outgoing Network Connection” from the list
- Click Next



### 3.5 Select UDP Connection

- Select “Outgoing UDP Connection” from the List
- Click next

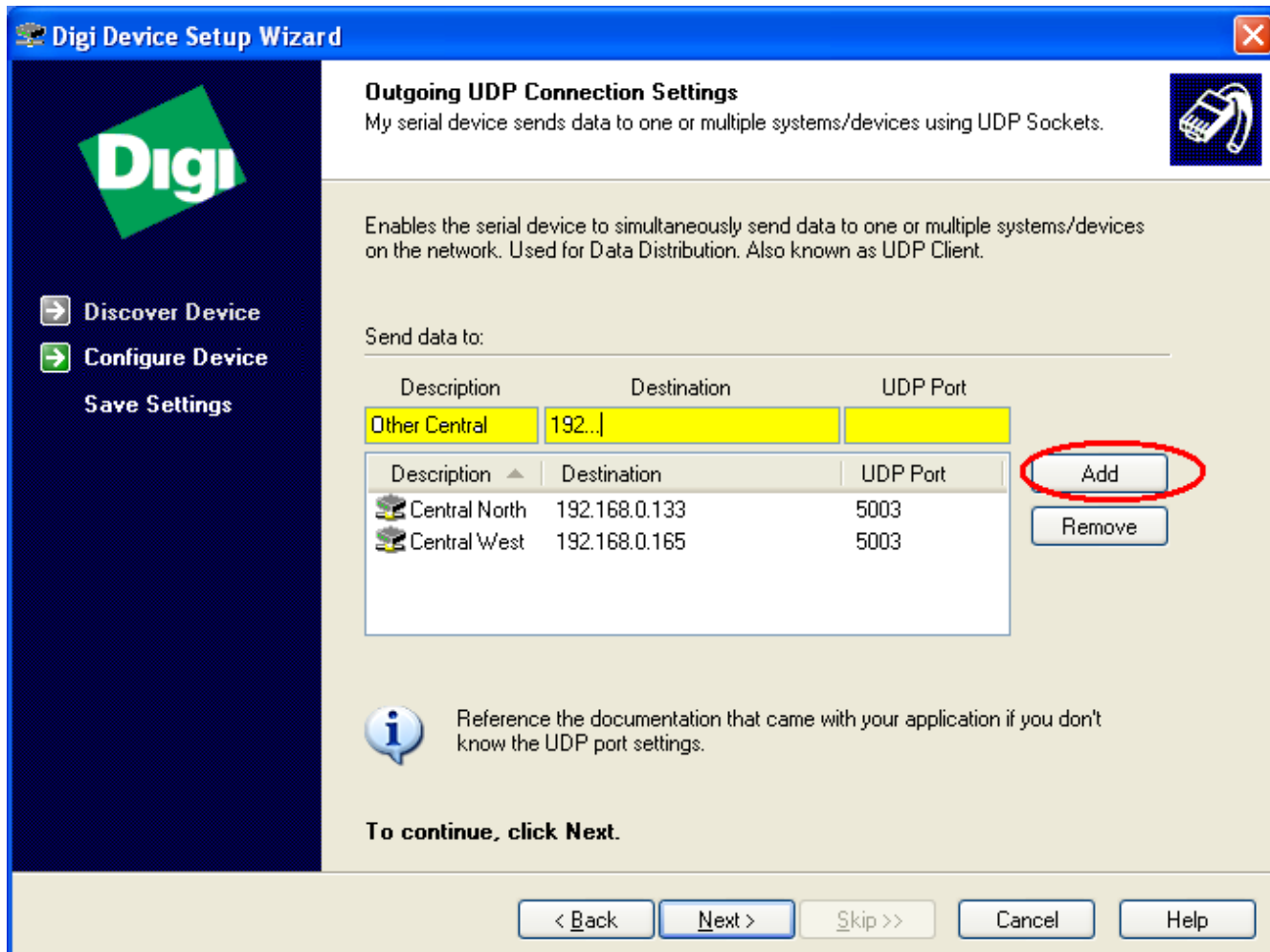
The screenshot shows the 'Digi Device Setup Wizard' window. The title bar reads 'Digi Device Setup Wizard'. On the left side, there is a dark blue sidebar with the Digi logo and three buttons: 'Discover Device', 'Configure Device', and 'Save Settings'. The main area is titled 'Select Outgoing Network Scenario' and contains the following elements:

- Scenario List:** A list box with four items: 'Outgoing TCP Connection', 'Outgoing TCP Connection', 'Outgoing UDP Connection' (highlighted in blue), and 'Custom Configuration'.
- Diagram:** A network diagram showing a 'Serial device' connected to a 'Digi' device, which is connected to a 'Network' cloud. The 'Network' cloud is connected to a 'System/Device' (computer) via a 'TCP' connection. A double-headed arrow labeled 'Data' spans the network connection.
- Description:** A text box stating: 'Select this scenario if you want to enable your serial device to automatically establish a TCP connection to another system/device on the network. [More...](#)'
- Application:** A text box stating: 'Automatic Connection, TCP Client'

At the bottom of the window, there is a prompt: 'To continue, click Next.' and five buttons: '< Back', 'Next >', 'Skip >>', 'Cancel', and 'Help'.

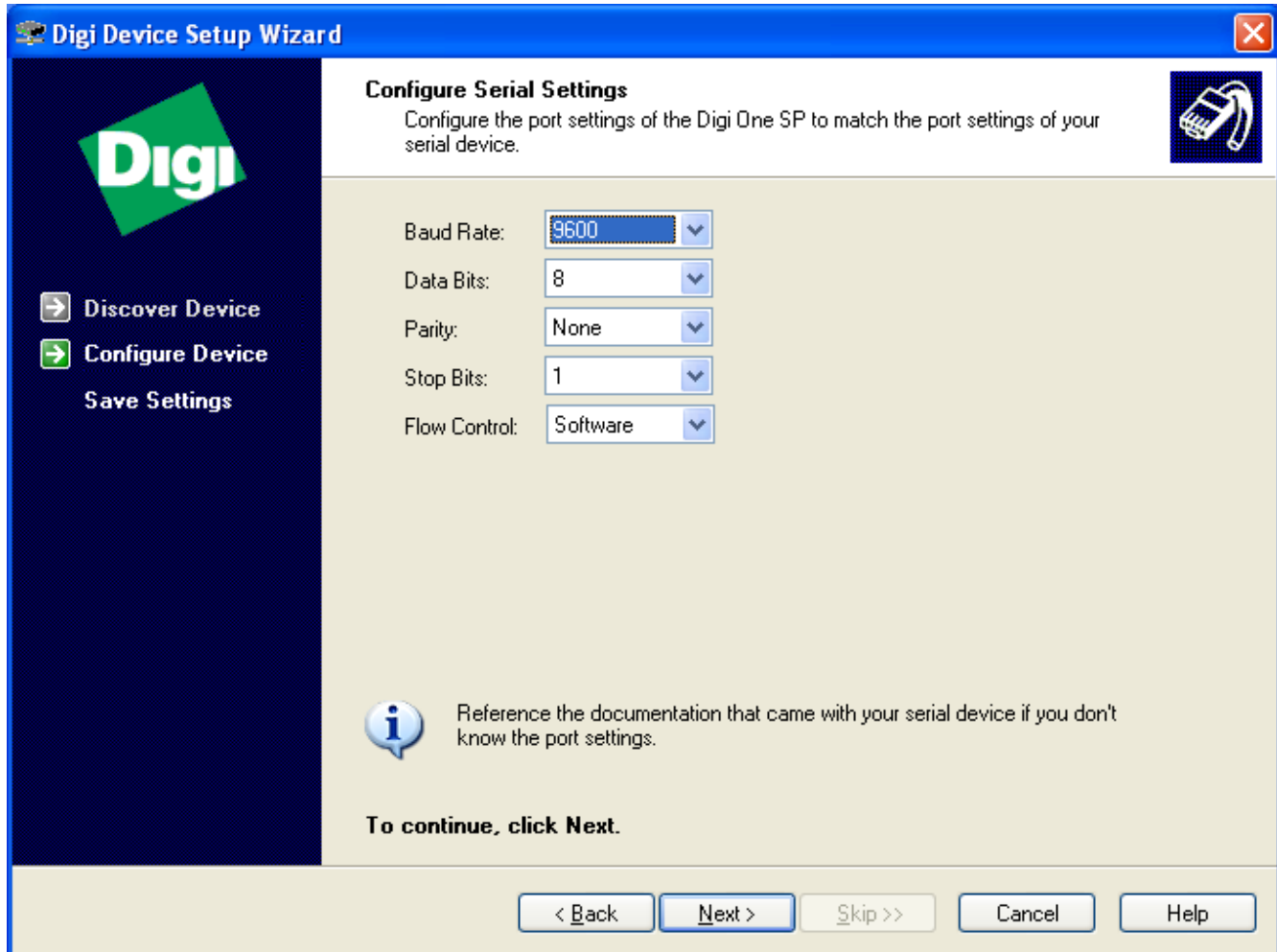
### 3.6 Set the information concerning the two centrals

- Enter a Description (optional)
- Enter the IP of one of the Central (mandatory)
- Enter 5003 in the UPD Port (mandatory)
- Click the “Add” Button
- Enter the same information for the second central
- Once the two centrals are declared, Click Next



### 3.7 Serial setting

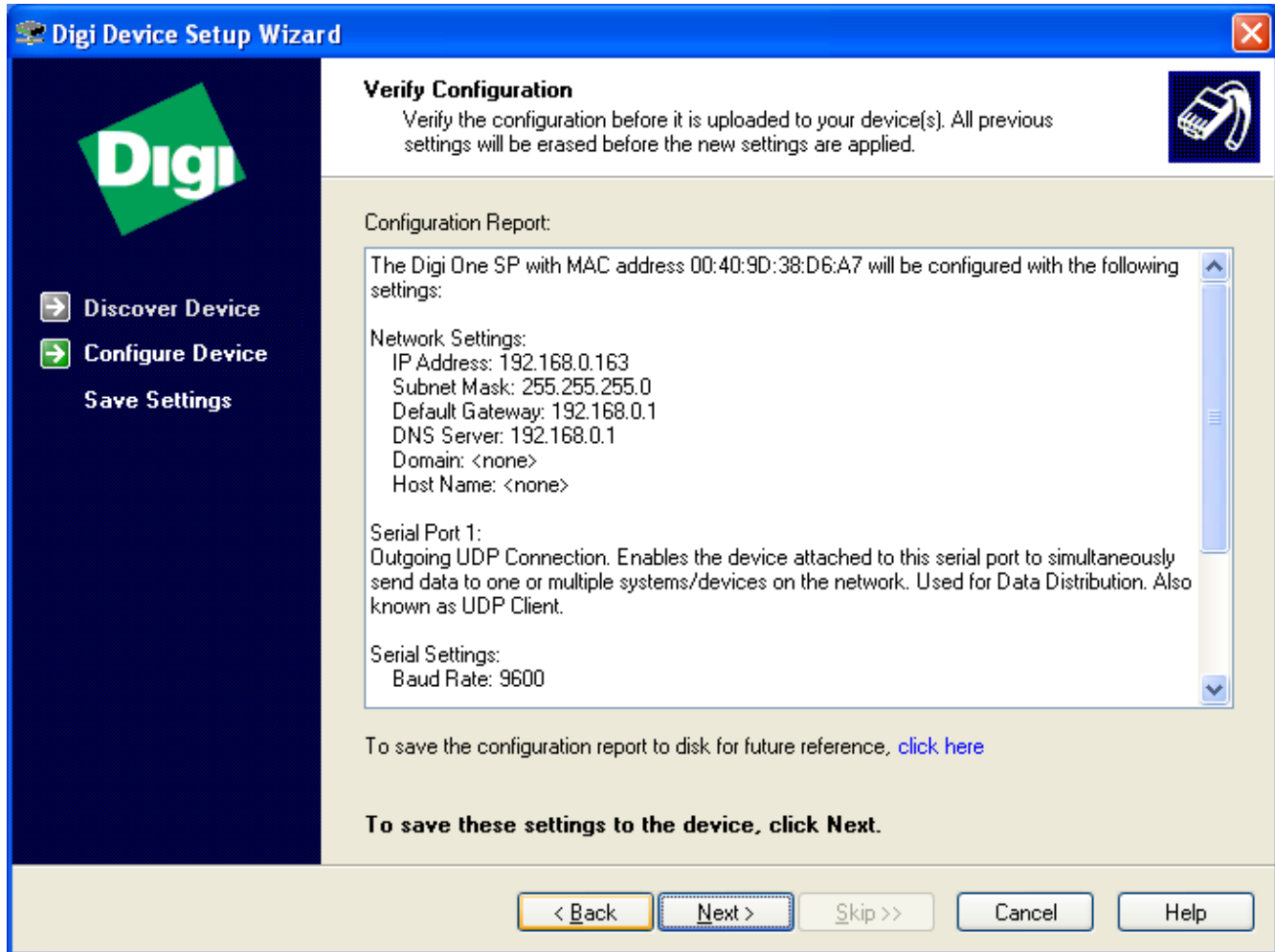
- Validate that all the information on this screen are the same
- Click next



The screenshot shows a Windows-style dialog box titled "Digi Device Setup Wizard". The window has a blue title bar with a close button in the top right corner. On the left side, there is a dark blue sidebar with the "Digi" logo and three menu items: "Discover Device" (with a right-pointing arrow), "Configure Device" (with a green right-pointing arrow), and "Save Settings". The main area of the window is titled "Configure Serial Settings" and contains the following text: "Configure the port settings of the Digi One SP to match the port settings of your serial device." Below this text are five configuration options, each with a dropdown menu: "Baud Rate" (set to 9600), "Data Bits" (set to 8), "Parity" (set to None), "Stop Bits" (set to 1), and "Flow Control" (set to Software). At the bottom of the main area, there is an information icon (a lowercase 'i' in a blue circle) followed by the text: "Reference the documentation that came with your serial device if you don't know the port settings." Below this is the instruction: "To continue, click Next." At the very bottom of the window, there are five buttons: "< Back", "Next >", "Skip >>", "Cancel", and "Help".

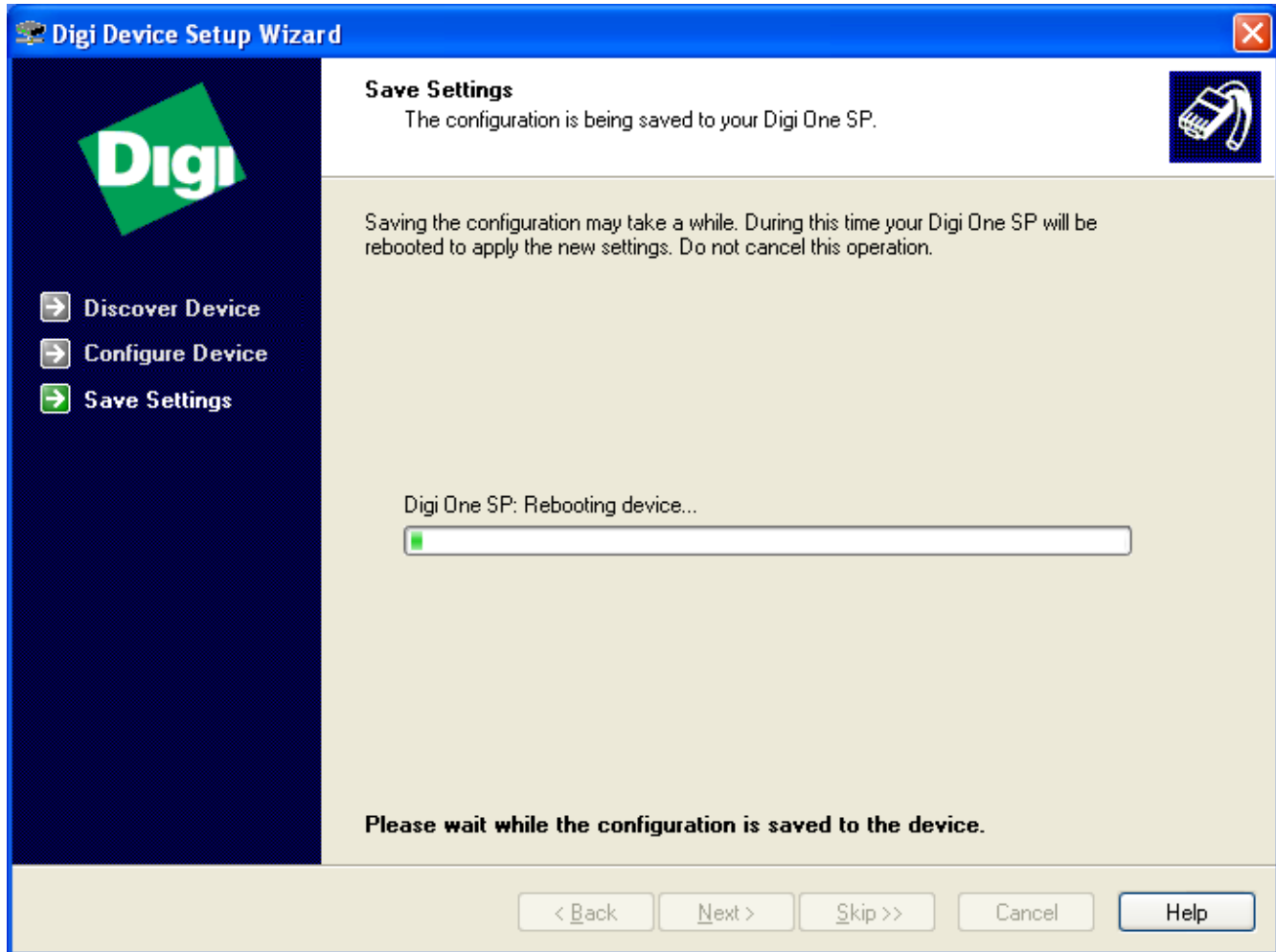
### 3.8 Validation

- Verify with your IP configuration
- Click next, the Digi One SP module will start its configuration



### 3.9 Wait

- The Digi One SP is being configured
- Wait for the next screen



### **3.10 Configure the Other Digi One SP**

- The Digi One SP has been configured to talk to the two central computers
- Select “Configure another device” to configure the second Digi One SP
- Go back to Step 3,2 and repeat the same configuration
- Once the second module is configured, close the wizard. The two modules are ready to talk with the two centrals.

## 4.0 Install the EN1223S module



**EN1223S**

- In the back of each EN1223S a tag tells the final location of this module like « TV Room N »
- Place them in the room corresponding to their nomination

## **5.0 Start the M900 Central**

- Start the central from the computer
- Check that all EN1223S are in the good room by sounding an alarm
- Verify that the Cancel button (EN1235S) works to cancel alarm from the good Ward
- Once this is done, your all set.